



Michal „Mišof“ Forišek

30. apríla 2016

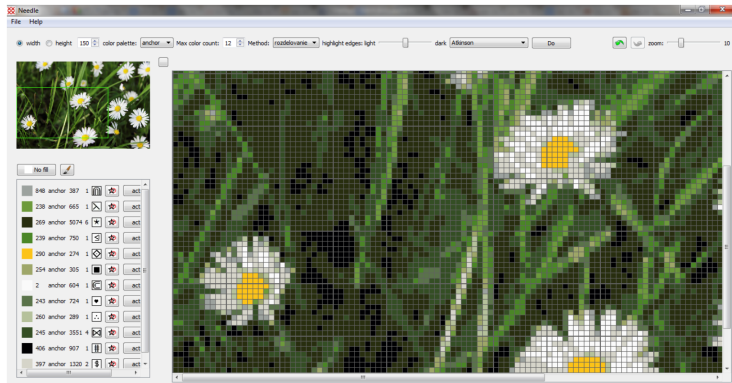
... na poslednú chvíľu

Michal „Mišof“ Forišek

30. apríla 2016

Generovanie vzorov pre vyšívanie

Anička Dresslerová (2014), bakalárska práca



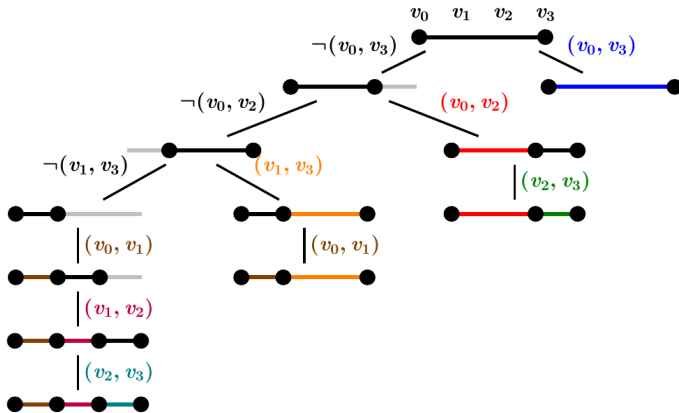
Rýchle testy prvočíselnosti pre obmedzený rozsah vstupov

Jakub Jančina (2014), bakalárska práca

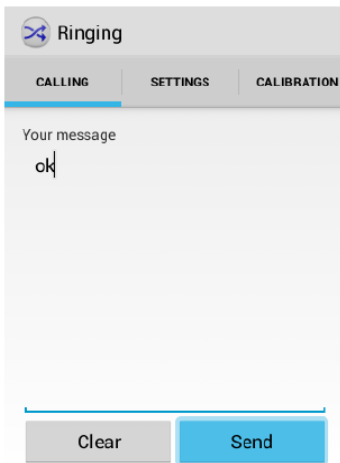
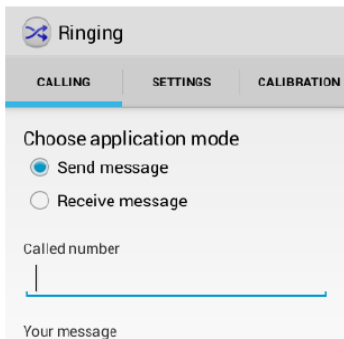
```
unsigned char bases[]={17,11,6,60,7,13,11,34,13,2,3,37,13,11,38,2,7,105,2,7,42,11,7,3,6,15,53,44,6,6,5,15,54,7,35,10,10,15,10,10,17,17,11,10,15,43,7,5,5,3,7,43,34,2,34,2,68,53,39,10,7,6,11,2,5,2,7,2,6,5,15,40,3,5,5,2,2,10,47,13,7,43,6,7,5,6,6,13,6,35,6,15,6,13,40,10,11,2,7,2,2,3,13,3,11,15,10,5,11,14,7,11,47,5,2,2,6,2,5,55,6,5,7,2,6,58,35,11,5,12,17,6,10,12,6,6,2,53,2,2,13,5,14,7,15,6,13,62,10,6,3,7,7,3,14,5,14,73,15,11,11,6,5,17,10,5,3,37,51,10,7,5,38,12,5,11,5,7,6,5,6,40,43,57,10,13,7,15,2,10,34,7,39,10,5,3,6,13,11,5,10,43,10,5,3,14,5,2,5,41,5,39,46,2,10,2,5,12,3,2,2,5,15,43,17,41,2,13,15,38,11,11,3,34,5,6,3,7,2,37,5,6,10,17,35,2,15,6,7,5,3,13,13,12,34,2,12,10,15,13,2,2,34,6,6,5,2,7,13,3,6,11,39,42,7,2,6,39,47,3,17,5,13,7,2,47,3,7,6,11,17,37,48,7,37,11,7,10,3,14,39,14,15,43,17,2,12,7,13,5,3,6,34,37,3,17,13,2,5,10,10,44,37,2,2,10,10,7,3,7,2,7,5,43,43,11,15,51,13,17,10,11,2,5,34,17,2,2,42,6,6,5,47,15,2,12,7,3,10,15,3,7,12,12,15,43,14,7,58,13,10,6,6,38,34,5,5,13,38,6,11,10,6,7,2,55,2,13,5,11,44,15,17,2,40,2,15,13,6,2,3,3,3,3,6,39,5,11,17,37,5,7,6,10,6,12,7,5,14,10,12,7,1,10,35,6,11,3,2,38,3,2,34,10,17,42,2,12,6,6,11,40,12,10,6,10,2,3,3,56,11,7,42,2,38,12,2,2,13,40,12,6,5,5,59,15,38,5,5,5,7,2,10,7,2,17,10,11,6,6,6,2,10,6,54,2,82,3,34,14,15,44,5,46,2,13,5,12,13,11,10,39,5,40,3,60,3,42,11,3,46,17,3,2,37,6,42,12,14,3,12,66,13,34,7,3,13,3,11,2,13,12,38,34,5,40,10,14,6,14,11,38,58,2,48,5,15,5,73,3,37,5,11,10,5,5,13,2,10,13,34,17,3,7,47,2,2,10,15,3,3,13,6,34,13,10,13,3,6,41,10,6,2,6,2,6,6,37,10,44,35,13,51,2,7,53,5,40,5,2,37,11,15,11,13,2,5,2,6,10,17,15,43,39,17,2,12,10,15,17,7,13,3,7,15,37,5,15,7,6,10,51,2,2,40,61,2,13,13,11,2,5,34,5,7,2,2,2,11,3,6,13,6,17,11,10,7,46,15,7,14,35,11,7,10,6,11,40,11,2,39,7,6,66,5,3,6,5,11,10,2,10,7,13,2,45,34,6,35,2,11,5,59,75,10,17,14,17,17,17,2,11,7,10,6,11,6,56,34,35,11,14,12,41,40,17,40,3,11,7,37,14,7,13,7,5,2,10,6,39,2,7,37,35,10,5,15,2,7,38,34,11,17,5,6,10,3,6,7,43,14,2,43,3,2,47,7,35,7,3,53,2,10,10,60,10,6,2,6,10,5,7,57,53,13,3,35,38,15,42,3,3,12,2,10,3,38,54,13,10,11,7,13,7,2,12,39,10,54,2,12,38,10,12,12,5,15,6,10,13,5,15,10,13,6,41,40,14,12,10,11,40,5,11,10,2,5,2,13,6,2,13,5,2,10,15,5,10,34,13,2,5,14,5,6,5,13,3,43,6,17,13,11,50,3,6,6,12,15,11,37,7,69,11,14,14,7,43,5,35,11,35,11,11,34,34,39,14,11,2,10,53,6,11,2,11,60,39,11,6,15,40,17,47,34,50,7,59,47,5,13,39,5,6,53,10,14,5,51,5,7,5,6,77,7,12,7,42,2,5,2,6,60,10,13,10,6,47,6,15,17,10,11,10,12,7,7,10,17,34,5,10,7,7,2,6,10,38,2,15,6,13,7,13,2,3,13,5,3,17,2,5,15,11,39,7,39,10,10,2,6,13,3,5,17,6,14,10,37,44,3,34,5,11,7,12,2,5,3,12,3,2,3,133,12,2,2,2,3,34,14,41,2,37,11,2,6,11,6,7,15,11,35,13,6,5,2,14,7,2};
```

```
bool is_prime(unsigned int x) {  
    if (x<2) return false;  
    if (x==2 || x==3 || x==5 || x==7) return true;  
    if (x%2==0 || x%3==0 || x%5==0 || x%7==0) return false;  
    if (x<121) return x!=1;  
    return is_SPPF(bases[(((long long)0xAFF7B4*x)>>7)&1023],x);  
}
```

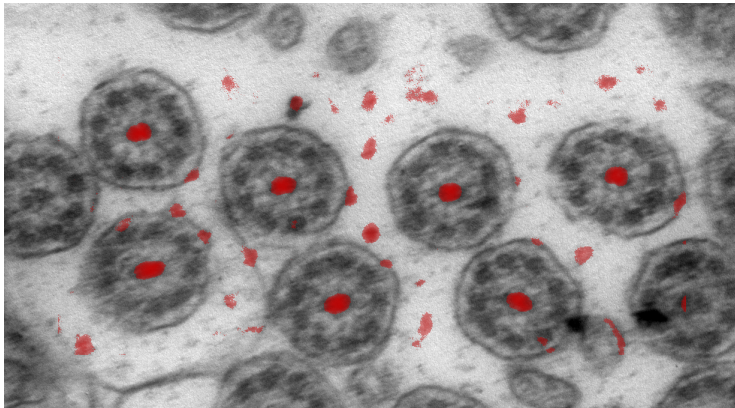
4+ magisterské práce (2012-14)



Martin Šrámek (2014), magisterská práca

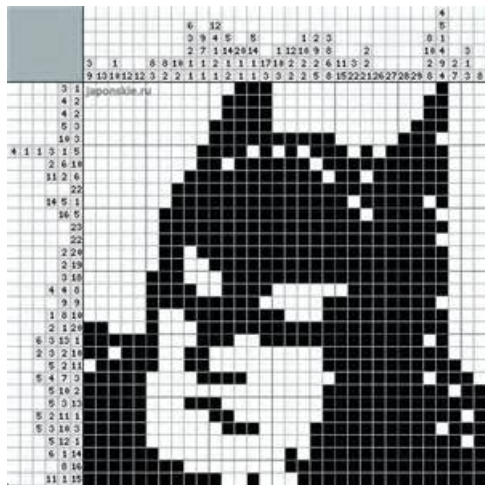


Majka Vajdová (2015), bakalárska práca



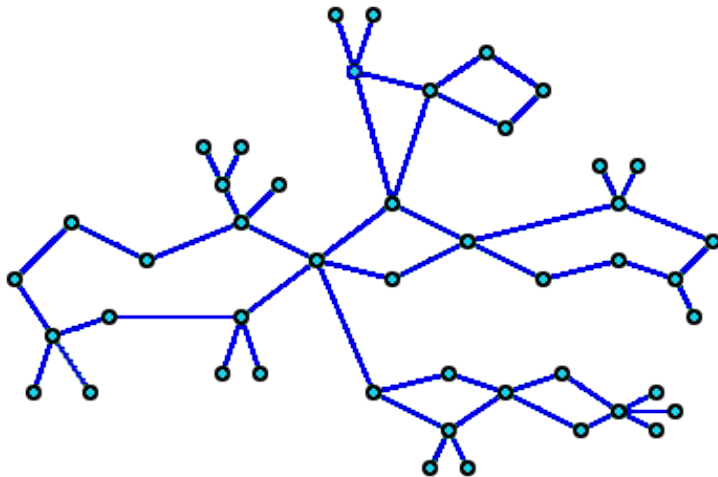
Odhad náročnosti riešenia maľovaných krížoviek

Kika Komanová (2016), bakalárska práca



L(2,1)-farbenia grafov

Anička Dresslerová, Mišo Anderle (2016), magisterské práce



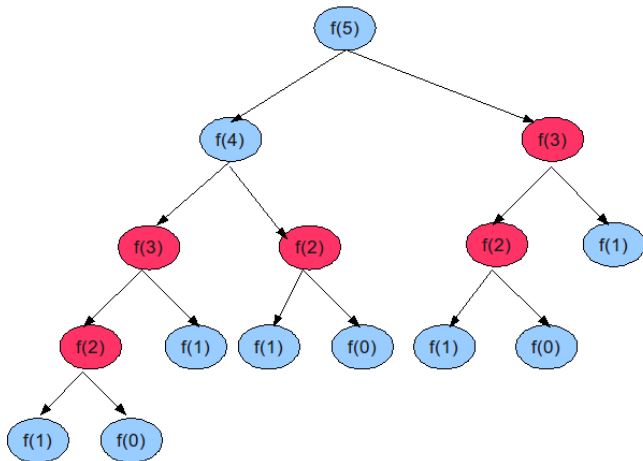
Rat Queens



Programátorské súťaže: IOI, ICPC, IPSC



your humble narrator (2015+)



April 16th, 2016

ROLL IT



World Championship
Brno - Slovak Republic / 18. 05. - 25. 10. 2016

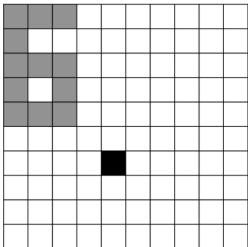
We have a block that looks like the digit 6:



Place this block onto the shaded area of the plan. Then, move the block by rolling it. In each step you can rotate the entire block by 90 degrees in one of the four cardinal directions. For example, if you roll the block downwards from its origin, the entire block will stand on the first three cells of the sixth row of the puzzle. The block can never leave the grid (not even partially), and it must never stand directly on any of the banned black cells.

The goal is to make the block touch the bottom right corner cell. At the end, the block may stand on any of its six sides and it may be rotated arbitrarily.

The puzzle below has a unique shortest solution that requires just 8 moves. Can you find it?



sifrovacka.sk (2011-2016)



sifrovacka.sk (2011-2016)

Vyrába: Pekáreň **KORUNKA**, **Kateřinská 32, 128 01 Praha 2**

LINECKÝ KOLÁČIK čajové pečivo trvanlivé

Zloženie:

pšeničná múka, maslo, cukor, vajcia, jahodový džem (cukor, **čas**, jahodová dreň, želírovacia látka - pektín, koncentrovaná jahodová šťava), **stolička**, kypriace látky (**E107, E097, E109, E101, E110**).

(si chúďatko niekde vo svete? nájdí si Puzzled Pint)

Ďakujem za pozornosť!